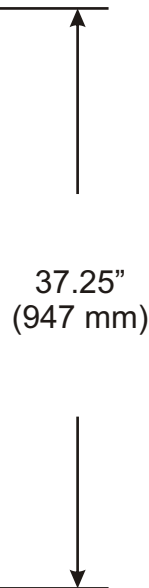
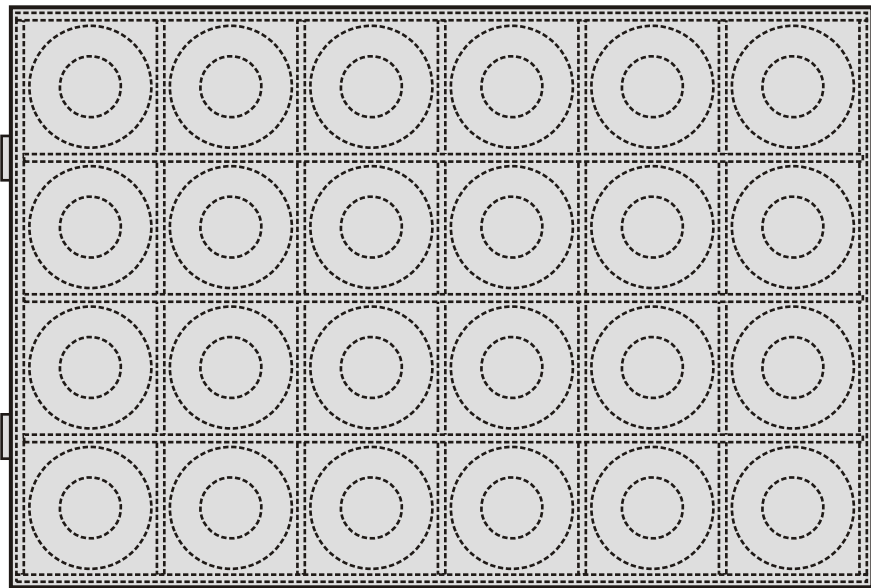


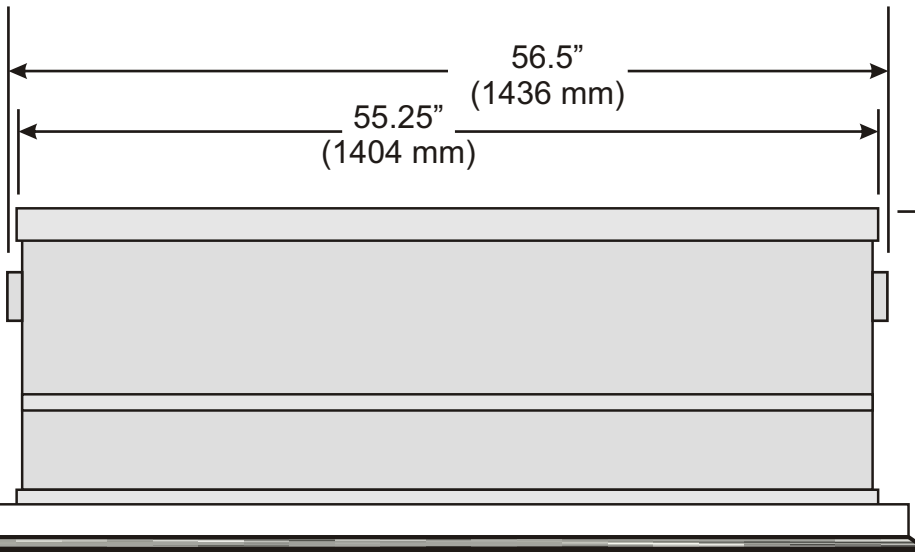
SVX6124 HY/TUNED™ SPRING ISOLATOR SPECIFICATION SHEET



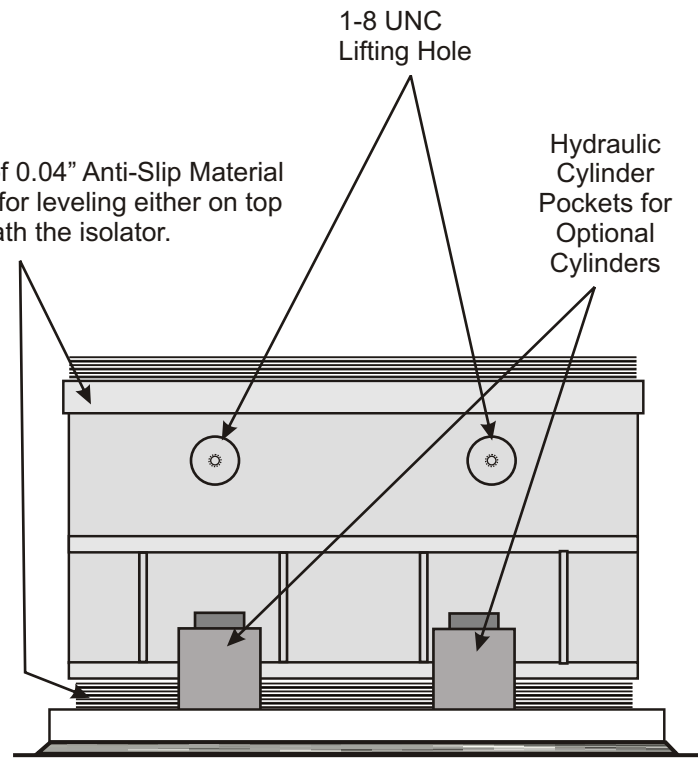
Isolator Model No.	Max. Load		Estimate Weight	
	lbs.	KN	lbs.	Kg
SVX6124-15-2424	675,650	3006		
SVX6124-15-2412	635,900	2829		
SVX6124-15-2400	596,160	2652		

NOTE: Isolator data subject to change without notice.

NOTE: The surface directly under the Spring Mount must not be sloped more than 0.03 inches/foot (2,2 mm/M) and the foundation flatness must be within $\pm 0.03"$ ($\pm 0,8$ mm). Grout plates are recommended if specifications cannot be met. Grout plates can be supplied by Vibro/Dynamics.



Operating Height without shims
17.9" to 18.1"
(455 - 460 mm)
Free Height
18.4" (467 mm)
Tolerance $\pm .2"$ (5 mm)



12 Layers of 0.04" Anti-Slip Material is provided for leveling either on top or underneath the isolator.

Grout Plate (see note)