



# VIBRO/DYNAMICS® RFQ – Die Casting Machine Data Sheet

Request for:  Quotation  Budgetary Estimate

## VIBRO/DYNAMICS Corporation

2443 Braga Drive  
Broadview, IL 60155-3941  
Telephone: 1-800-842-7668 or 708-345-2050  
Fax: 708-345-2225  
[www.vibrodynamics.com](http://www.vibrodynamics.com) Email: [Vibro@vibrodynamics.com](mailto:Vibro@vibrodynamics.com)

New Customer Quote No. \_\_\_\_\_

Customer Number: \_\_\_\_\_ Date: \_\_\_\_\_

(For Office Use Only)

Salesman: \_\_\_\_\_

Territory: \_\_\_\_\_

Name: \_\_\_\_\_ Phone: \_\_\_\_\_

Title: \_\_\_\_\_ Fax: \_\_\_\_\_

Company: \_\_\_\_\_ Email: \_\_\_\_\_

Address: \_\_\_\_\_ City: \_\_\_\_\_

State/Province: \_\_\_\_\_ Postal Code: \_\_\_\_\_ Country: \_\_\_\_\_

Send quote via:

Fax

Email

Mail

Please complete both sides and return to Vibro/Dynamics

### I. Machine Data

Machine Manufacturer: \_\_\_\_\_ Machine Model Number: \_\_\_\_\_

Machine Type (two-platen, toggle, three-platen): \_\_\_\_\_ Serial Number: \_\_\_\_\_

### II. Weight Data English Metric

Total Machine Weight (Dry): \_\_\_\_\_ Moving Weight: \_\_\_\_\_

Maximum Velocity of Moving Platen: \_\_\_\_\_

If there are robotics, are they attached to the floor or the machine? \_\_\_\_\_

If possible, indicate machine weight by section:

Clamp End: _____	Shot End: _____
Maximum Die Weight: _____	Hydraulic Fluid: _____ <small>(7.5 lb/gal : 0.9 Kg/L)</small>
Total Weight: _____	Total Weight: _____

Please indicate number of mounting points by section:

Clamp End: \_\_\_\_\_ Shot End: \_\_\_\_\_

Some machine builders have calculated minimum and maximum weights expected at each mounting support point as the moving platen and mold move from one end of the stroke to the other end. If you have a drawing that shows this information, please include a copy or provide us with the project engineer's name and phone number: \_\_\_\_\_

III. Expected Installation Date: \_\_\_\_\_

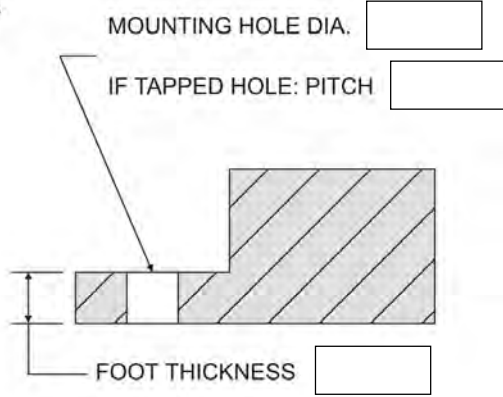
IV. Please Provide A General Assembly Drawing, If Possible.

V. CHECK TYPE OF MOUNTING POINT AND LIST APPLICABLE DIMENSIONS

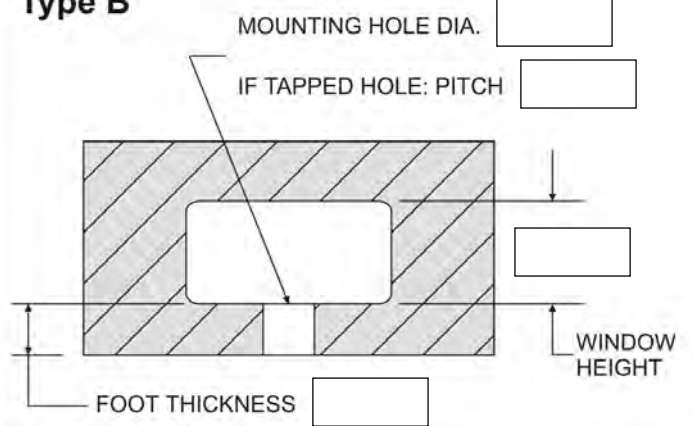
For the following data, please indicate units of measure:  English  Metric

If blind tapped hole: Mounting Hole Diameter  Pitch  Depth

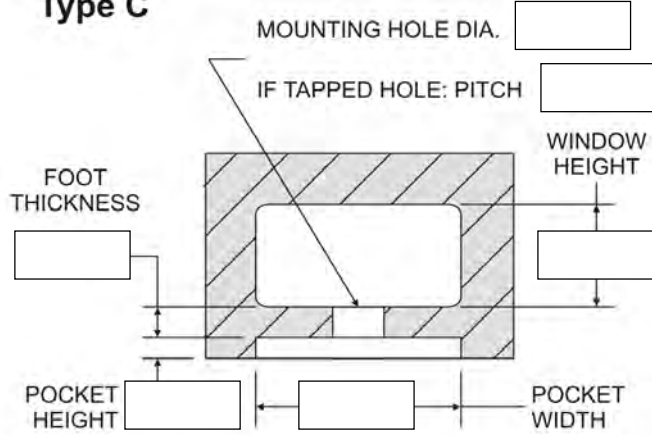
**Type A**



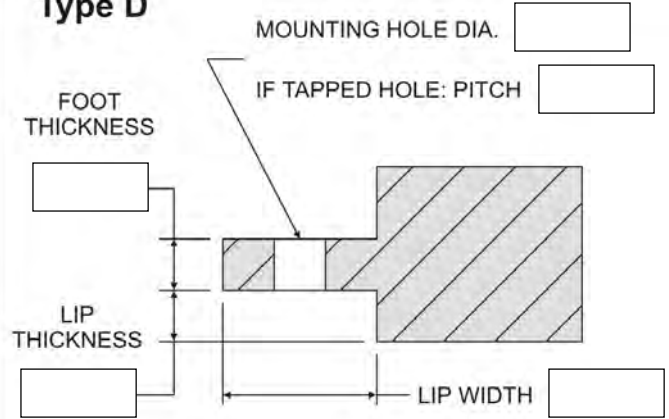
**Type B**



**Type C**



**Type D**



VI. Use the space below for sketches and/or comments on any special considerations.